

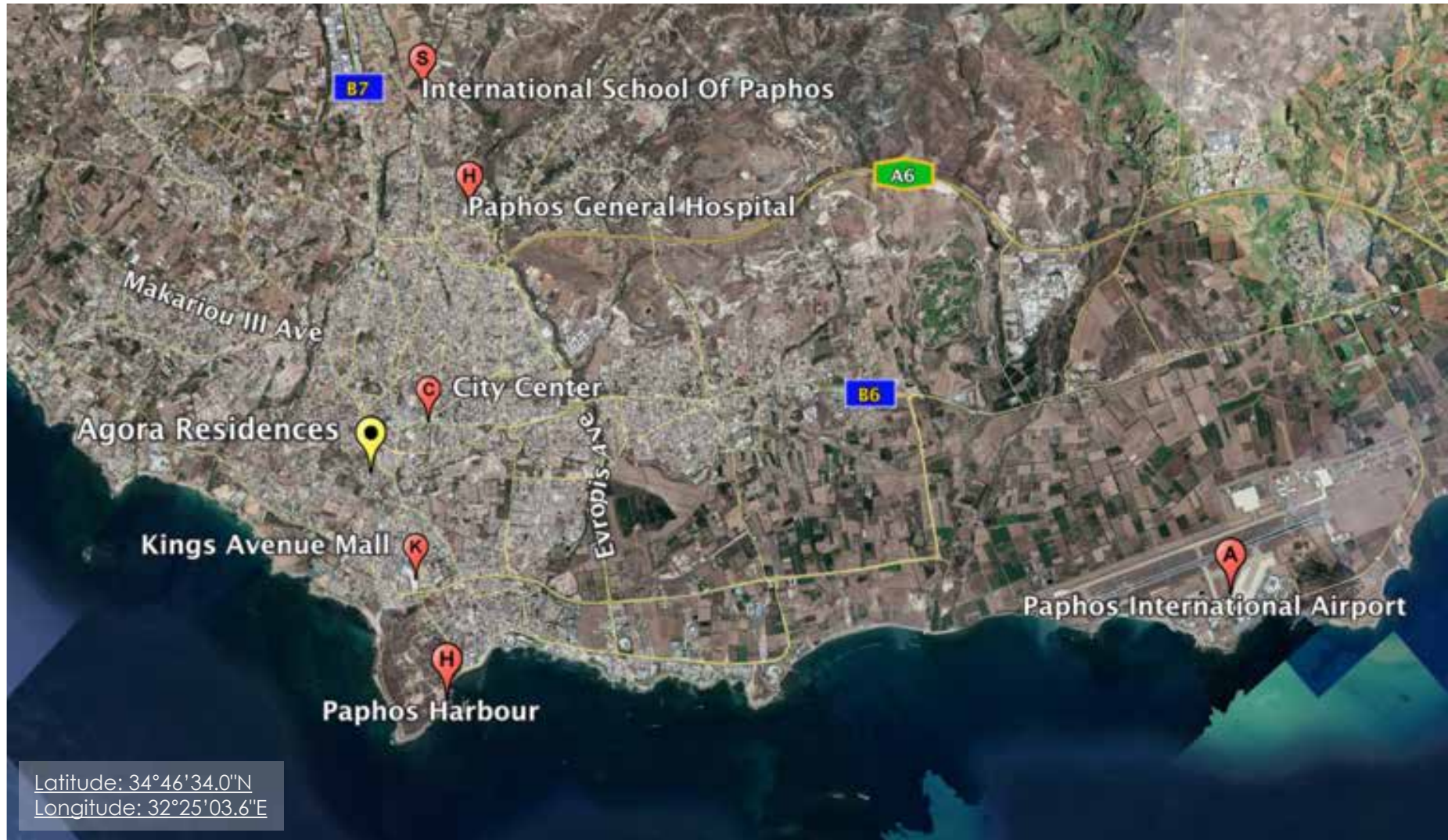
Agora Residences | Block 1
CYPRUS



Agora Residences - Block 1

Located in the heart of Paphos old town within close proximity to amenities, this contemporary apartment development comprises of two four storey buildings. The luxuriously designed one and two bedroom apartments include a state-of-the-art kitchen equipped with contemporary appliances as well as spacious living areas which open on to a private balcony. Few things beat the exquisite rooftop garden and swimming pool located on the fourth floor! Residence can also enjoy the pool side changing facilities and breathtaking panoramic views of the city landscape and Mediterranean.



Project Location



 17 km	 100 m	 1.3 km	 800 m	 500 m
--	--	---	--	--













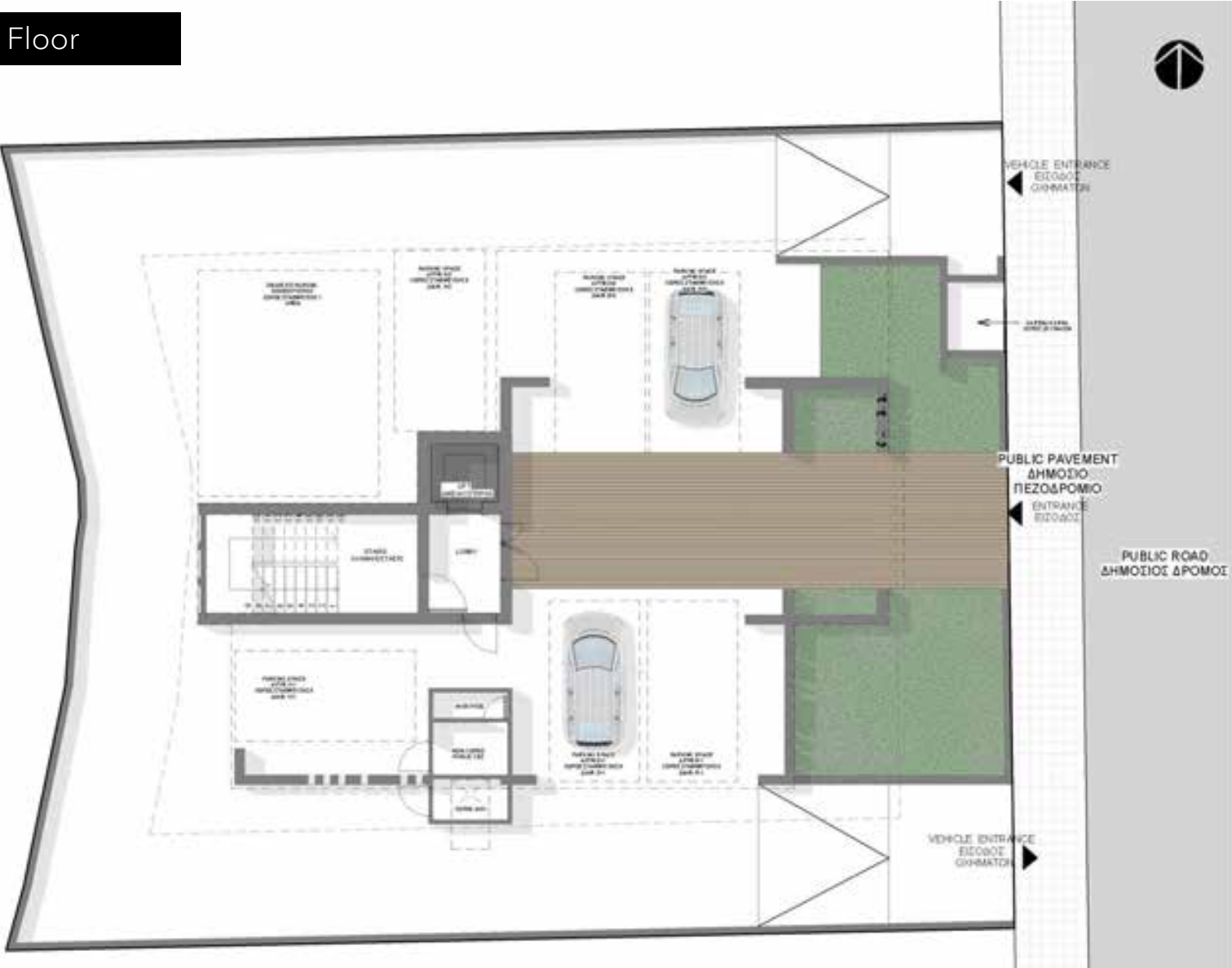
Agora Residences Block 1 Apartments

Consists of:

6 APARTMENTS - 3 x 1 BRM & 3 x 2 BRM									
		BUILT AREA	COVERED VERANDAH	UNCOVERED VERANDAH	PARKING		LOBBY	CIRCULATION	COMMUNAL USE
					COVERED	UNCOVERED			
PILOTI					AMEA -28.8sq.m(GF)		9 sq.m	19 sq.m	8 sq.m (AHK) & 110.88 sq.m (Covered Area on Parking Area)
FIRST FLOOR	APT. 101 1 BRM	50 sq.m	16 sq.m		1 - 11.52sq.m(GF)			24 sq.m	
	APT. 102 2 BRM	75 sq.m	20 sq.m		1 - 11.52sq.m(GF)				
SECOND FLOOR	APT. 201 1 BRM	50 sq.m	16 sq.m		1 - 11.52sq.m(GF)			24 sq.m	
	APT. 202 2 BRM	75 sq.m	20 sq.m		1 - 11.52sq.m(GF)				
THIRD FLOOR	APT. 301 1 BRM	50 sq.m	16 sq.m		1 - 11.52sq.m(GF)			24 sq.m	
	APT. 302 2 BRM	75 sq.m	19 sq.m		1 - 11.52sq.m(GF)				
ROOF PLAN				39.4 sq.m					CHANGING ROOMS 13.6 sq.m SWIMMING POOL 19.2 sq.m
TOTAL AREAS		375 sq.m	107 sq.m	39.4 sq.m	69.12sq.m		9 sq.m	91 sq.m	151.68 sq.m

Plot Area: 558 sq.m
Total Built Areas: 842.2 sq.m.

Plans | Ground Floor



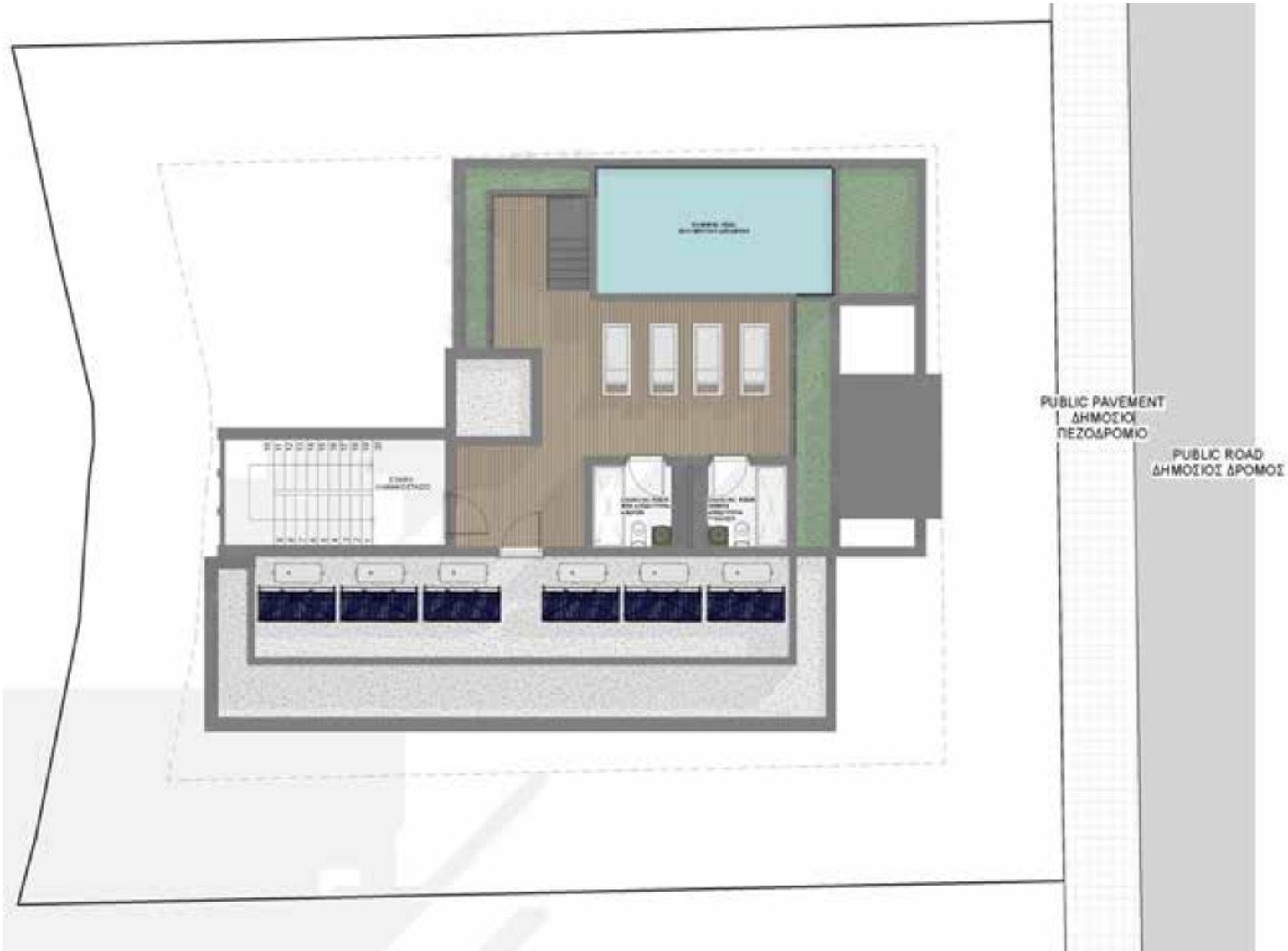
Plans | Second Floor



Plans | Third Floor



Plans | Fourth Floor
Roof Garden with Swimming Pool



Plans | East Elevation



Plans | West Elevation



Plans | North Elevation



Plans | South Elevation





Apartments Finishes

Internal Features

- Solid Iroko Wood Entrance Doors
- Imported Marble on Floors, Stairs and Bathrooms
- Top Quality Laminate Wooden Cupboards Doors and Wardrobes
- Granite Kitchen Worktops
- Natural Solid Oak Wood Parquet Floor in Bedrooms
- Double glazed windows with aluminum frames
- Hansgrohe mixers
- Duravit toilets with wall-mounted Geberit flush system

Other

- Lifts to all floor
- Solar system for heating water
- Pressurized water system
- Rooftop common garden & infinity swimming pool with Italian mosaic tiles
- Provision for Air - Condition System
- Quality electrical appliances - (optional - extra cost)
- Full furniture package - (optional - extra cost)
- Fully Air-Conditioning - (optional - extra cost)

External Features

- External walls will be partly on traditional stone cladding, wood cladding and fair face concrete
- High Quality Ceramic Tiles on Verandas and balconies
- Landscaped common Garden with Irrigation system
- Privately owned Parking on ground level
- Balustrade of Laminated Glass

IMPORTANT NOTES, ASSUMPTIONS AND QUOTATION CRITERIA

- Upon finalization of design and agreed Architects Preliminary Planning Drawings; a custom drafted Construction Specifications document will be produced specifically, for this property
- Square meter prices can and do vary depending upon property design, type and location. The above figures should in no way infer a standardized and are for guideline purposes only
- The above is subject to Planning Authority Terms & Conditions
- Construction Guarantee for 1 years will be given to the clients by the development company